



**iCon Compact** table tops

**iCon Compact** table tops

durable  
 adaptable



[ag-vebo.com](http://ag-vebo.com)



# iCon Compact table tops








+386 1 2568 467

www.ag-vebo.com

www.vebo.si

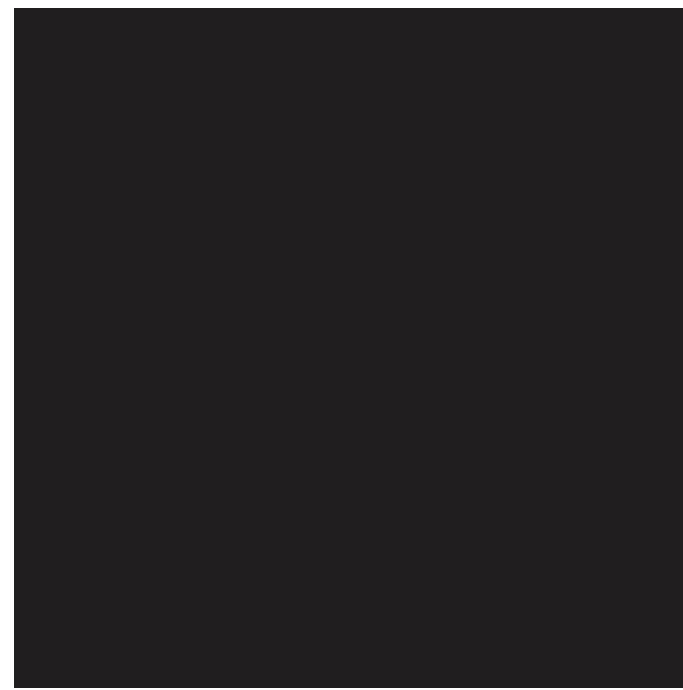


## FEATURES

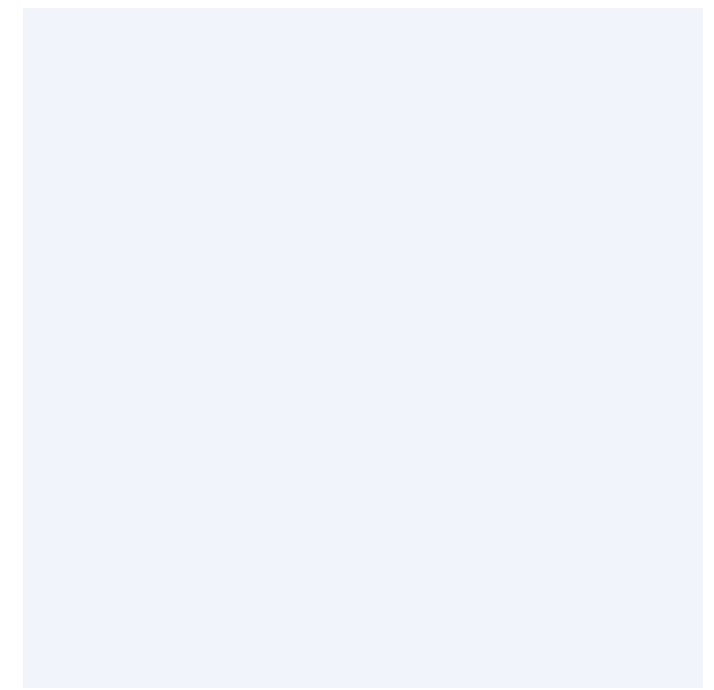
-  Water Resistant
-  Heat Resistant
-  Colourfast
-  Scratch Resistant
-  Environment Friendly
-  Stain Resistant
-  Rot Resistant
-  Resistant To Cigarette Burns
-  Flame Resistant
-  Impact Resistant
-  Easy To Clean
-  Sleek Modern Design
-  Minimum Maintenance
-  Suitable for Contract use
-  Stability
-  Indoor and Outdoor use
-  Weather Resistant







RC 11



RC 13



RC 13 / RC 851 and various other shade of white)



*For your garden...*





RC 659





RC 667









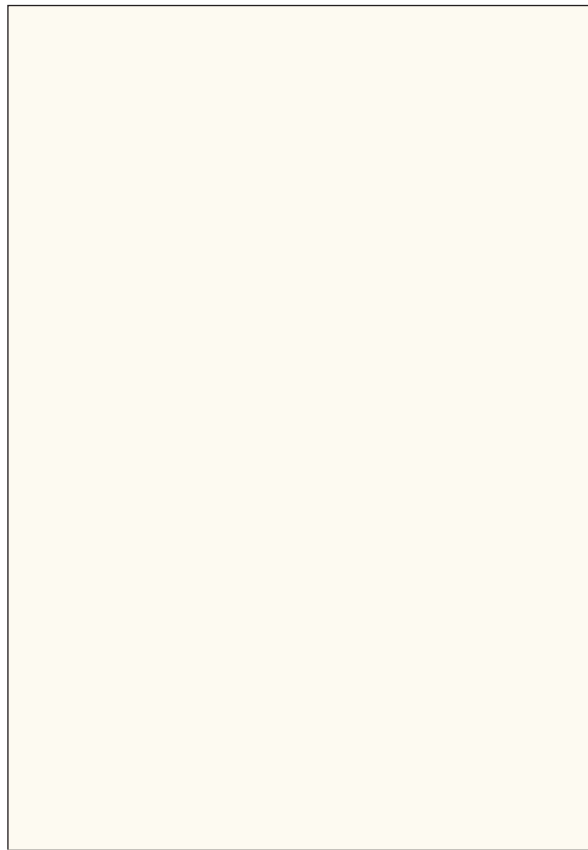
EXP 51





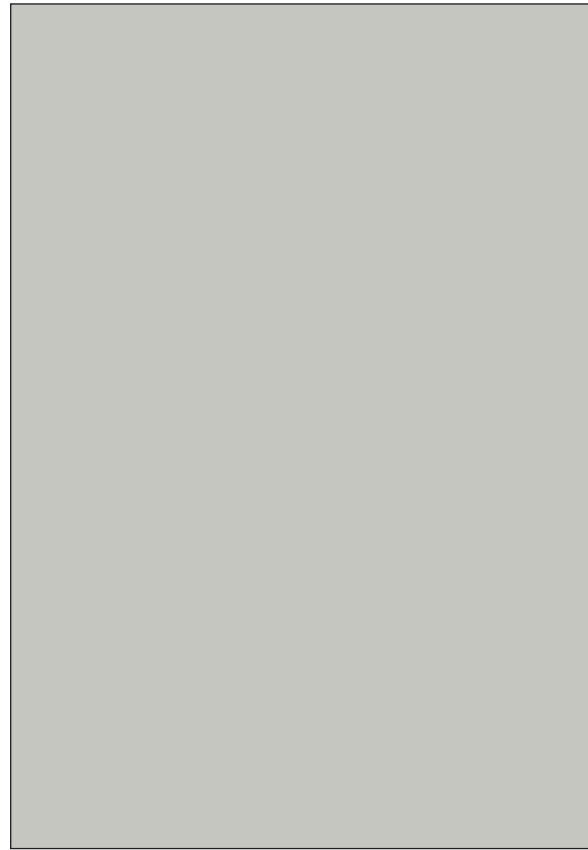


# Decors



RC 13XL

Egg White



RC885XL

Grey



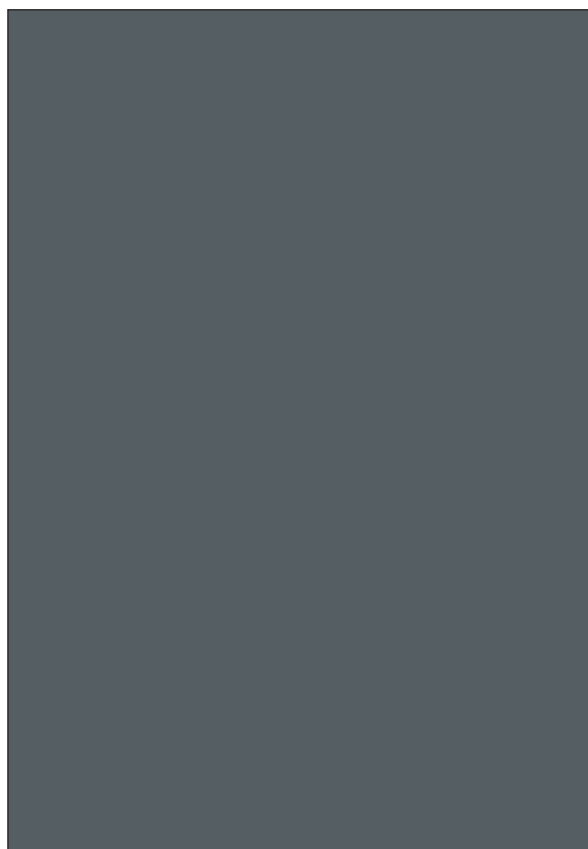
RC893XL

German Oak



EXP51

Novecento Pine



RC873XL

D.Grey



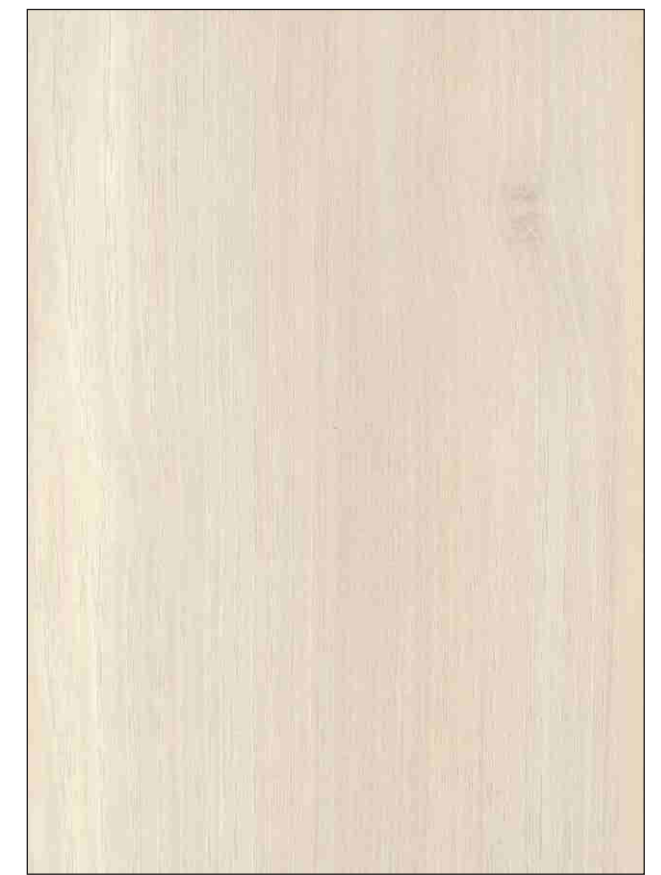
RC11XL

Black



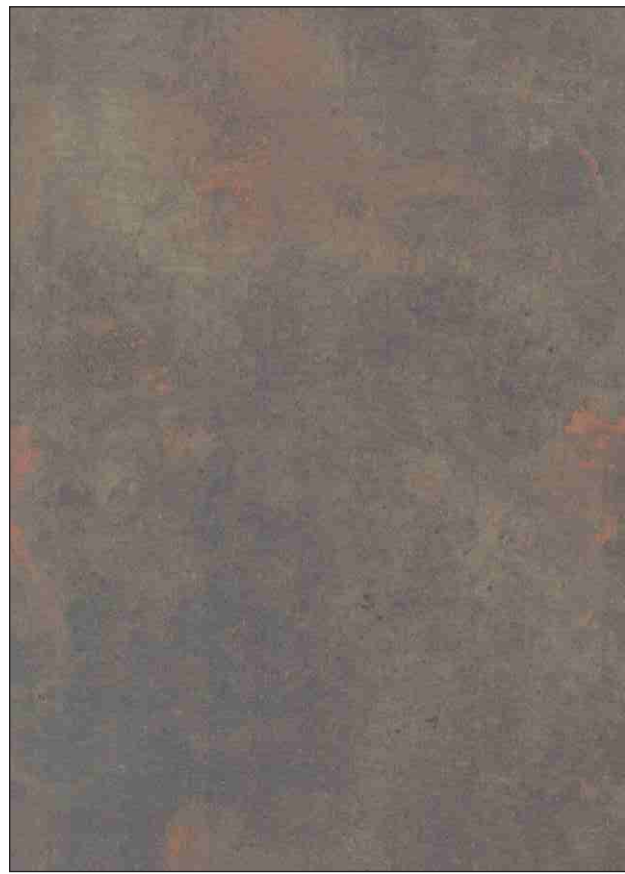
RC 906XL

Moldau Acacia

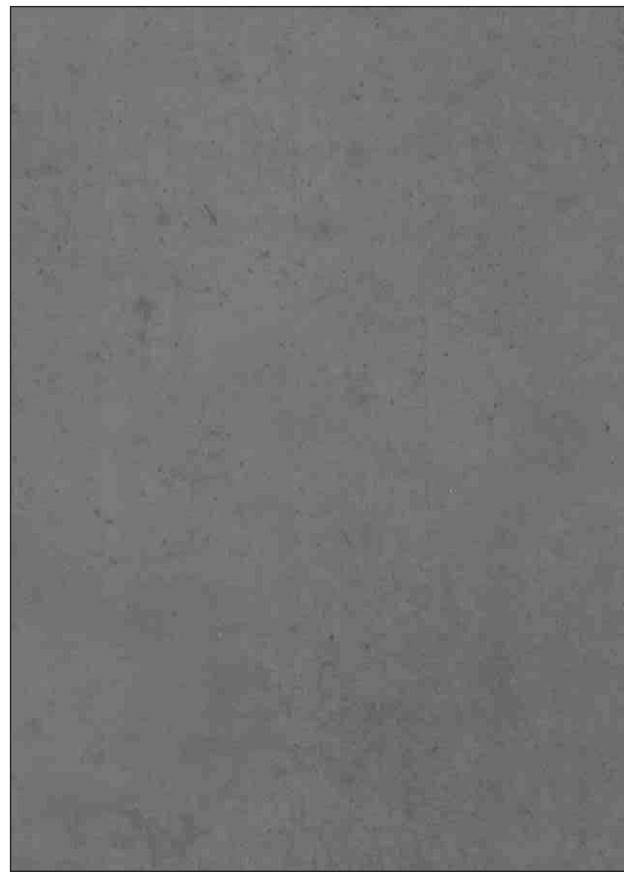


RC 907XL

Moldau Acacia



**RC 659XL**      **Metalic Oxid**



**RC 924XL**      **Manhattan**



**RC 916XL**      **Alberta Maple**



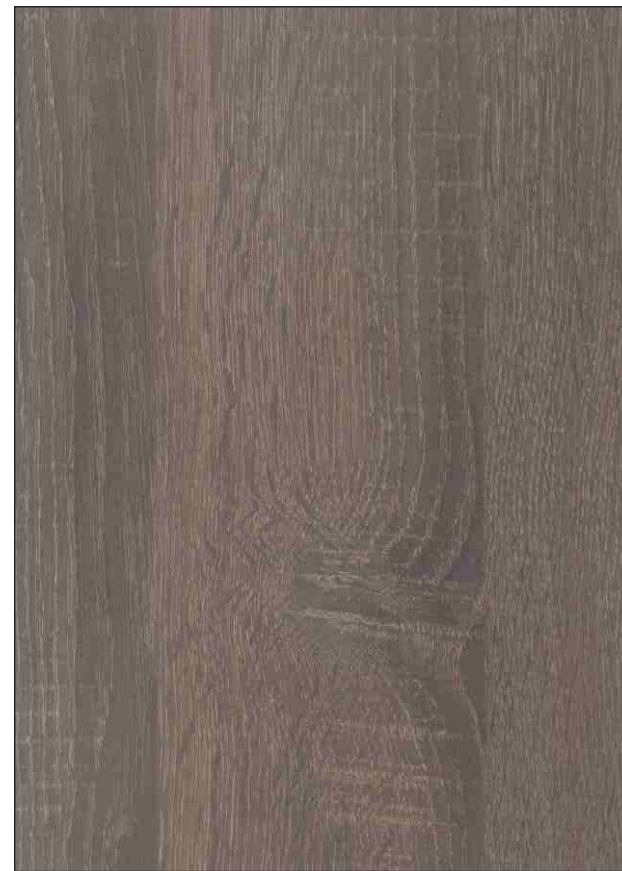
**RC 909XL**      **Bavarian Beech**



**RC 913XL**      **Sonama Oak Light**



**RC 894XL**      **Douglas Pine**



**RC 914XL**      **Sonama Oak**

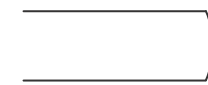


**RC 667XL**      **Concrete**

Other decors on request.



## EDGES



- rounded



- chamfered



- bevelled

**Various fixings possible for all types of table bases. Our OGFA (One Groove Fix All) system allows you to put any base in place. There are also inserts available for M5 and M6 screws - we just need a drawing with the distance between the holes from the base flange.**

## PRODUCT

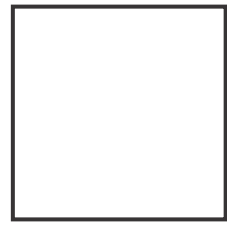
**iCon Compact** is made of HPL, a very strong material using an advantage technology of the multi head numeric controlled machine, using a milling or a specially designed cutter which guarantees maximum precision and a perfect finish. These are non porous surface that makes it easy to clean and maintain a good hygiene. Just a daily cleaning with damp cloth is enough

These tops can with stand Scratches and Temperature changes. These are Water Resistant, Colour Fast, Environmental Friendly, Impact Resistant, Rot Resistant, Flame Resistant, Heat Resistant and Mould Resistant.

## PREVENTION

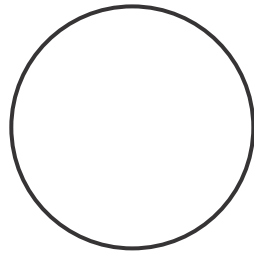
- Direct contact of hot surfaces should be avoided. Better use a pot holder.
- Avoid direct cutting on surface by a sharp object to prevent scratches.
- Avoid using aggressive cleaning agents. These panels can withstand normal soft cleaning agents
- Avoid shoving heavy and hard objects such as beer and shopping crates
- Avoid covering the top with a protective cover which may cause permanent stains due to weathering, suffocation or moulds. Let the top breath normally.

## SIZES (Sizes in cm)



**SQUARE**

60x60  
70x70  
80x80  
90x90  
120x120



**ROUND**

60  
70  
80  
90  
120



**RECTANGLE**

70x60  
120x60  
110x70  
120x80  
160x90  
180x90

- other sizes on request

### Thickness:

12mm  
Other Thickness on request

### Core

Black Core

★ Table Tops can be customised

## PACKAGING



★ Single & Two piece packing available  
★ Bulk packing also available